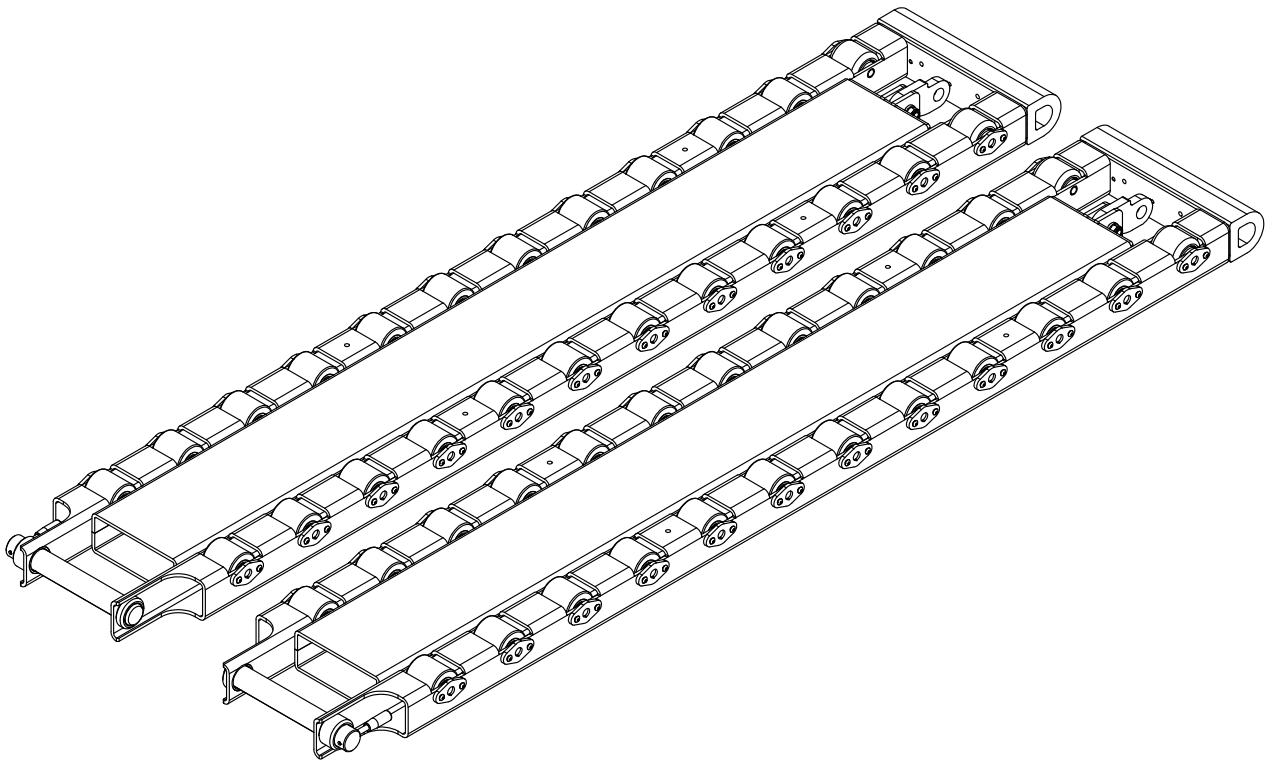


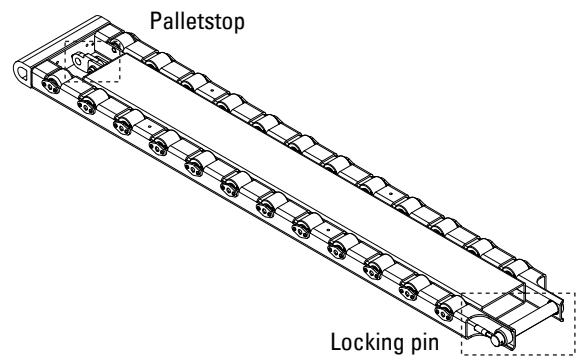
Appendix - RTE - FOD locking system



General description

A Rollerized Tine Extender (RTE) Foreign Object Damage (FOD) can be used in combination with a forklift, for handling air cargo pallets. The FOD locking system does not contain any loose parts, to prevent damage to the aircraft (engine).

The locking pin mechanism secures the fork to the RTE. The palletstop secures load placed on the RTE. The plate has to be manually engaged. A rubber bumper can be used to prevent damage to the aircraft while using the RTE.



Safety



Warning:

Do not make use of the RTE FOD when the locking pin is not in the secured position.



Caution:

Check the RTE FOD for loose parts, tighten bolts and nuts if necessary.



Caution:

Recalculate the residual load capacity of the forklift with the RTE FOD.



Caution:

Before use, check if locking pin and palletstop are locked.

Manual number: MA03052017-06ENG

Publication date: 14-06-2024

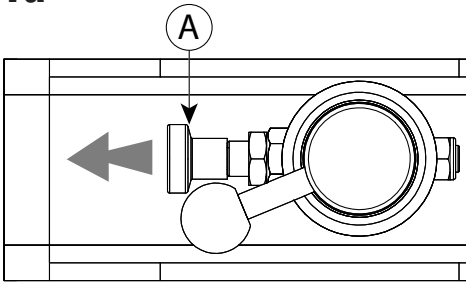
Language: ENG

Revision: 06

Mounting on forks

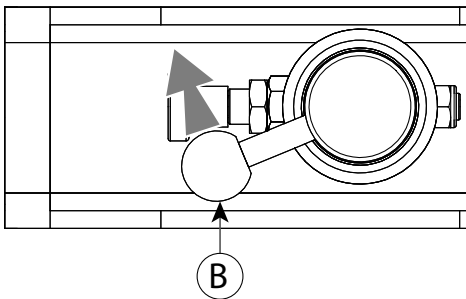
Extend pins

1a



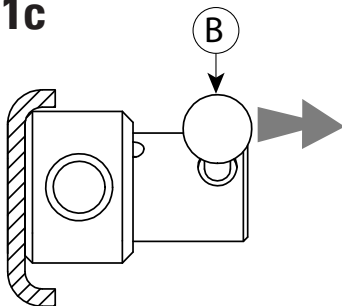
Pull and hold the plunger [A] to disengage the locking pin.

1b



Rotate handle [B] clockwise, until it can't go further.

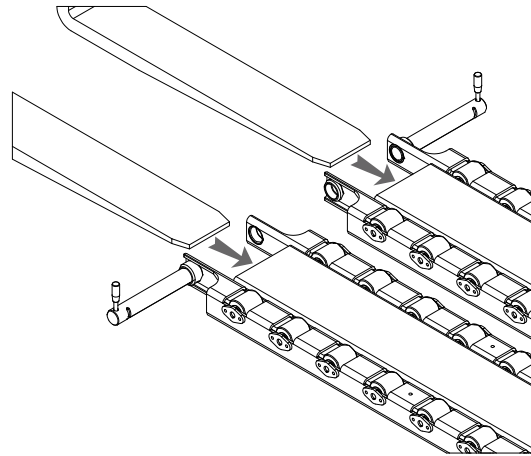
1c



Pull handle [B] outwards until fully extended.

Insert forks

3



Move the forks into the insert-pockets of the RTE's.

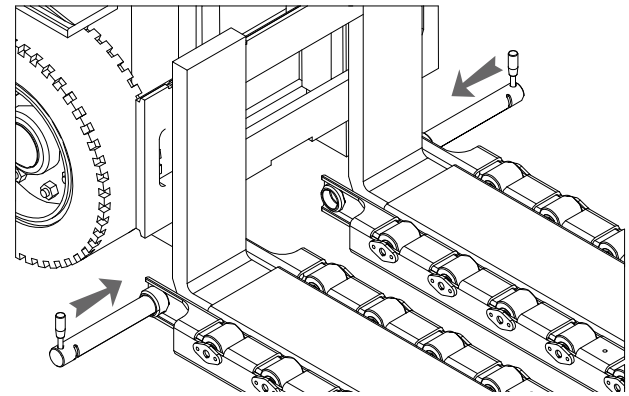


Caution:

The fork length must be at least 60% of the length of the RTE.

Retract pins

4



Perform step 1c followed by 1b, reversed, to secure the forks.

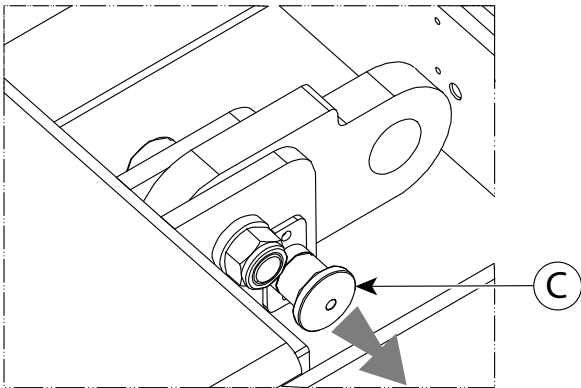


Caution:

For safe function, the plunger (see step 1a) must be retracted.

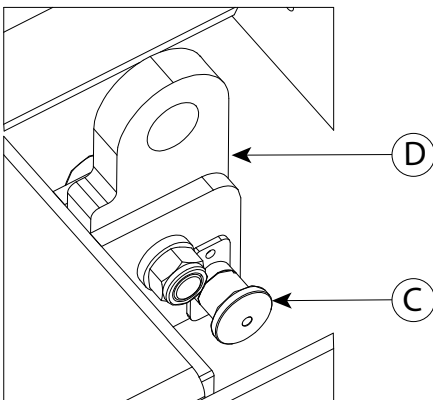
Use of the palletstop

Unlock palletstop



Pull and hold plunger [C] to disengage palletstop.

Rotate palletstop



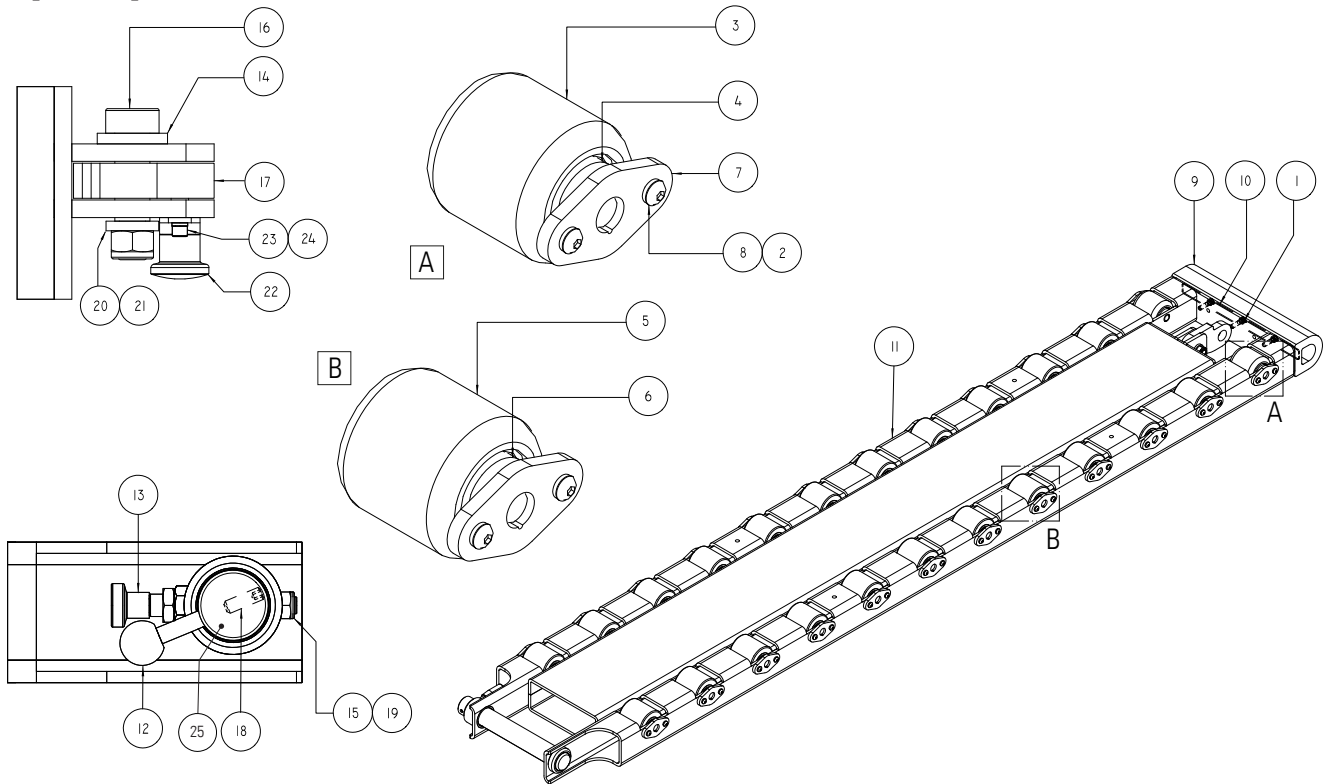
Rotate and lower palletstop [D] until plunger [C] retracts and the palletstop is locked.



Caution:

For safe function, the plunger must be retracted.

Spare parts



Pos No	Description	Article N°	Total Qty
1	Hexagon socket head cap screw M10x35 DIN 912	07160 M10x35	3
2	Nord-Lock Washer M8	37967.080.001	**
3	Assembly steel wheel	10130451	2
4	Washer 21x44x8	M00013170	4
5	Pallet wheel	10129973	**
6	Shim 20x28x1.5	M00021384	**
7	Pin	M00022619	**
8	Hexagon socket button head screw M8x18mm ISO 7380	M00022626	**
9	Rubber Bumper	*	1
10	Rubber Bumper strip	M00043716	1
11	Frame RTE	*	1
12	Handle	10111051	1
13	Stainless steel plunger GN 613-8	10110978	1
14	Washer 21x40x6 DIN 125A	10103526	1
15	Self-locking nut M12 DIN 985	12300 M12	1
16	Hexagon socket head shoulder screw M16 20x50	10103524	1
17	Palletstop safety plate	10103256	1
18	Hexagon socket set screw M10x30 DIN 916	M00039519	1
19	Hexagon socket set screw with dog point M12x25 45H DIN 915	10103517	1
20	Washer 17x30x5,5 DIN 125A	10103525	1
21	Self-locking nut M16 DIN 985	12300 M16	1
22	Stainless steel plunger GN 822.9	10110974	1
23	Hexagon socket screw M5x12 mm DIN 912	07160 M5x12	2
24	Nord-Lock Washer M5	M00022418	2
25 L	Locking pin (left version as shown)	*	1
25 R	Locking pin (right version)	*	1

* Depending on specific model. Please provide serial number when ordering

** Amount depends on specific model.