

Appendix - ATEX REACHFORKS®

Manual number: MA28032018-03ENG Language: EN
Publication date: 04-10-2021 Revision: 03

Inhoudsopgave

General description.....	1
Safety:.....	1
Operating temperature range.....	1
ATEX-certification plate.....	1
Standards and directives.....	1
Maintenance Schedule.....	2
Checking thickness of wear strips.....	2
Checking thickness of stainless steel cladding.....	2
Additional spare parts - ATEX Y0 (without palletstop).....	3
Additional spare parts - ATEX Y2 (with palletstop).....	4

General description

KOOI-Reachforks®, with or without Y2 palletstop, equipped with the ATEX certification label, use stainless steel outer sleeves and partially or fully clad inner forks, suitable for use in potentially explosive atmospheres.

Safety:



Warning:

KOOI-Reachforks® with ATEX-certification, may only be used on static-dissipative floors.



Caution:

The KOOI-Reachforks® type plates need to be visible and readable at all times.



Caution:

Under no circumstance may the KOOI-Reachforks® be used when the thickness of the stainless steel cladding is less than 1 mm, due to risk of ignition (see 'Checking thickness of stainless steel cladding' for more information).

Operating temperature range

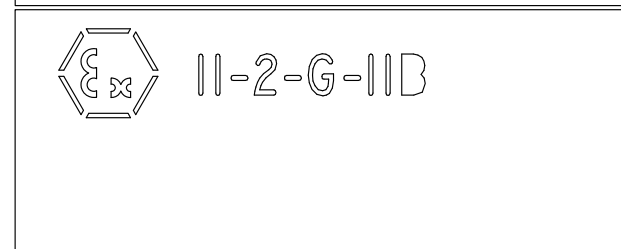
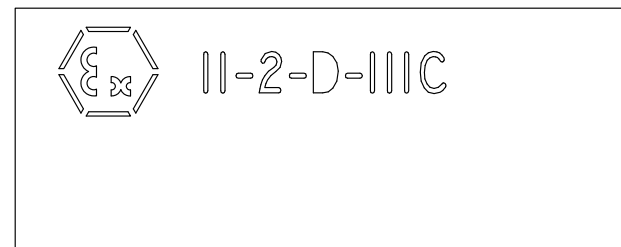
Operating ambient temperature range: -30°C tot + 40°C

Highest allowable temperature of the KOOI-Reachforks®: 120°C

ATEX-certification plate

ATEX-certified devices or machined need to be marked indelible and legible with a specific explosion protection mark followed by the symbol of the equipment group and category.

See ATEX directive, for further explanation of the symbols.





Always check the type plate of the KOOI-REACH-FORK to see if it is certified. For location of the ATEX type plate, see the spare parts lists.

Standards and directives

- CE (2014/34/EU) - ATEX 114
- NEN-EN 1755 : 2015 - Industrial Trucks - Safety requirements and verification - Supplementary requirements for operation in potentially explosive atmospheres

Maintenance Schedule

N°	Description	Weekly	Monthly	6 months or every 1000 hours	Annually or every 2000 hours
1.	Checking thickness of wear strips.				
2.	Checking thickness of stainless steel cladding.				

Checking thickness of wear strips

To avoid detaching of the wear strips from the outer sleeves, replace the wear strips when the thickness is lower than 2,5 mm. See additional spare parts list at the end of this appendix for the location of these wear strips.

Checking thickness of stainless steel cladding



Warning: Do not perform these checks whilst there is pressure in the hydraulic system (remove key from forklift ignition switch).

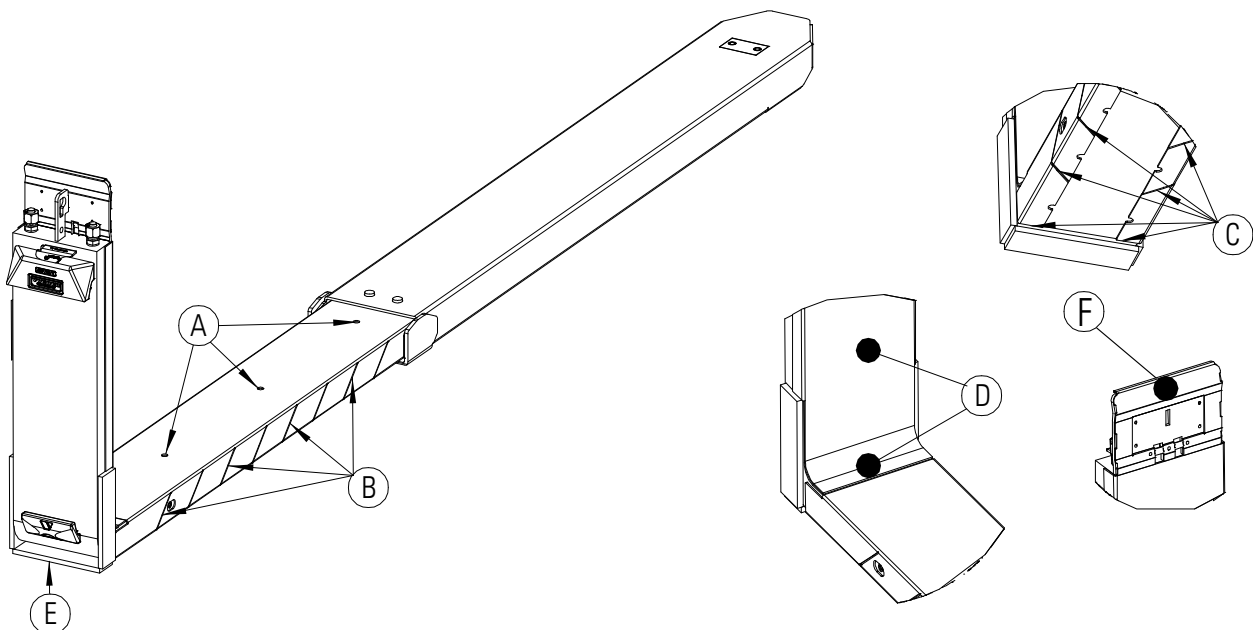
To check the thickness of the stainless steel cladding, perform the following actions:

1. Fully extend the outer sleeves.
2. Check the thickness of the cladded parts referred to as A to E (see figure below). The thickness must correspond to the table below. If the thickness of a cladded part is less than described in the table, that part needs to be replaced.

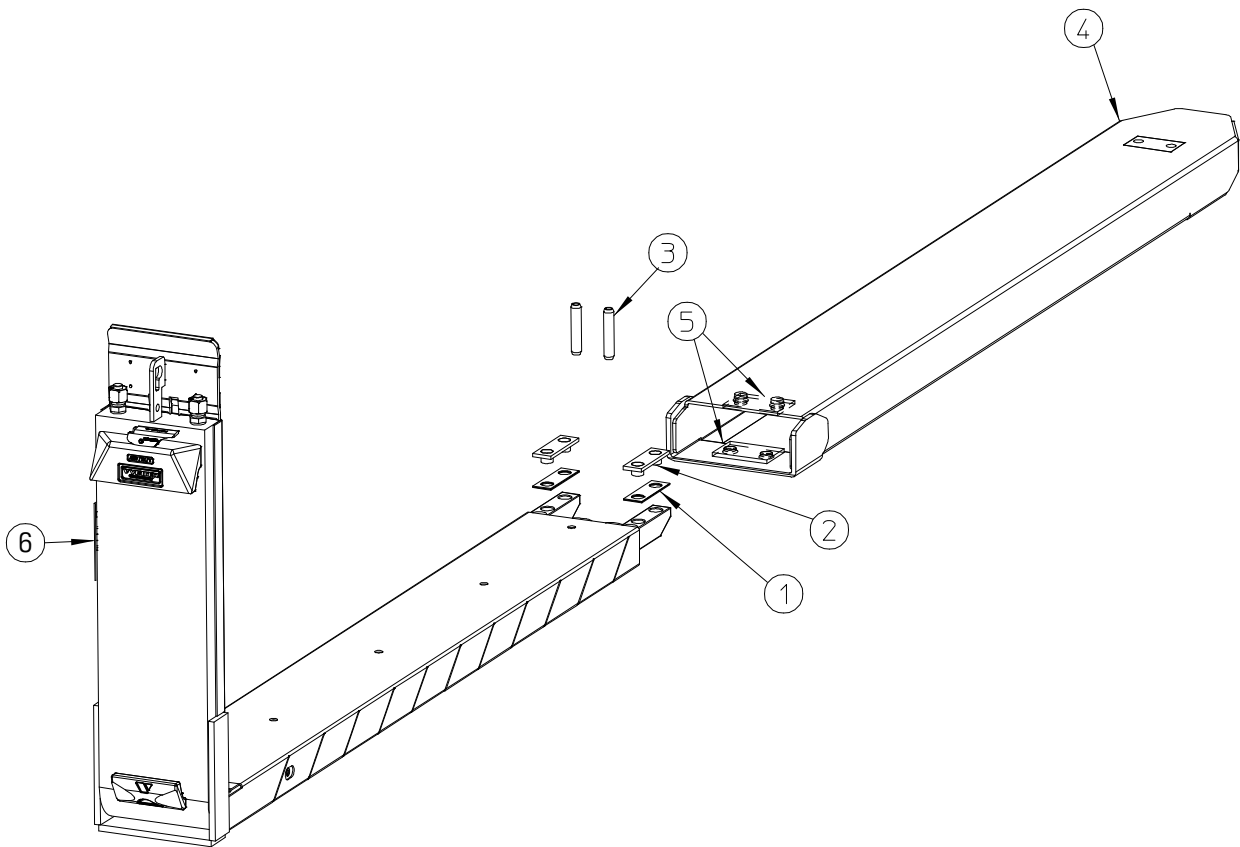
Part / segment:	Minimal thickness
A; B; C; D; F**	1 mm *
E**	2 mm *

* Replace part(s) when it is deformed or cracked.

** For KOOI-REACHFORKS with palletstop, only section 'E' and 'F' need to be checked.



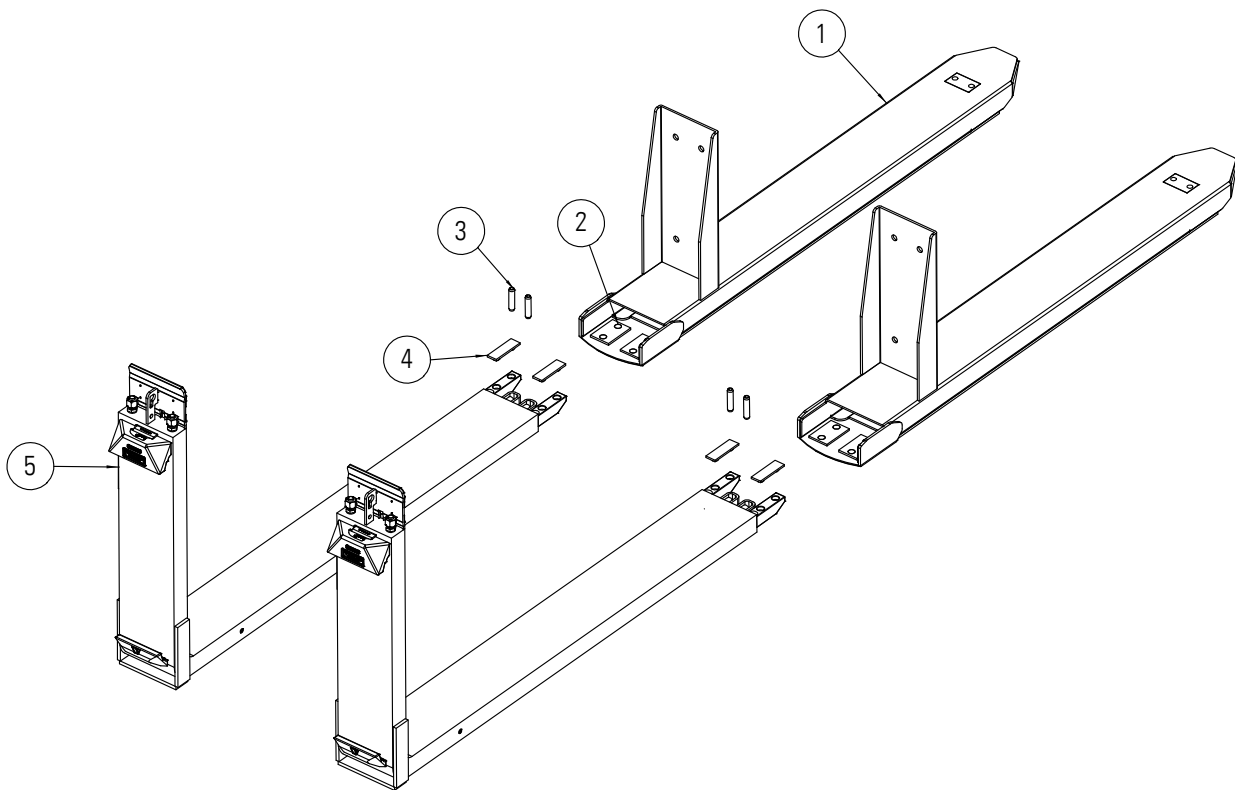
Additional spare parts - ATEX Y0 (without palletstop)



Pos. N°	Description	Article N°	Number of parts per set
1	Filler plate 80x25x1 mm	RE0092002	8
2	Wear strip 80x25x4,5 mm ATEX	10094024	4
3	Spring pin stainless steel	*	*
4	Outer sleeve stainless steel	*	*
5	Wear strip 75x50x4,5 mm ATEX	RE0020009	4
6	ATEX type plate	*	2

* Article N° depending on specific model. Please provide serial number when ordering.

Additional spare parts - ATEX Y2 (with palletstop)



Pos. N°	Description	Article N°	Number of parts per set
1	Outer sleeve stainless steel	*	*
2	Wear strip 75x50x4,5 mm ATEX	RE0020009	4
3	Spring pin stainless steel	*	*
4	Wear strip 80x25x4,5 mm ATEX	RE0020001	4
5	ATEX type plate	*	2

* Article N° depending on specific model. Please provide serial number when ordering.